

**\*\*BRAND NEW HOME\*\***

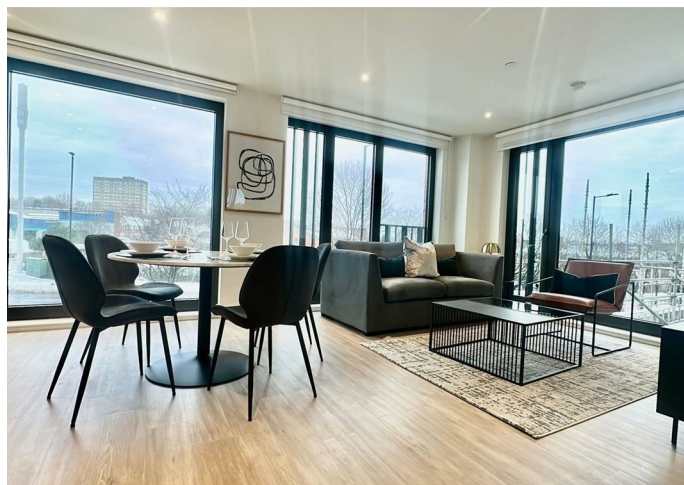


# GLASSWATER LOCKS, 107 BELMONT WHARF 2 PITT STREET, BIRMINGHAM, B4

## £1,200 PCM

### FEATURES

- BRAND NEW HOME & FURNITURE
- Concierge, Gym, Library, Games Room, Coffee Lounge & More!
- Fully Furnished Including Crockery & Sofa-Bed
- Walking Distance To New Street/Bullring
- Parking Available For £100 PCM
- Extremely Spacious Corner Plot
- Floor To Ceiling Windows
- Luxury Development
- Ideally Located For Aston Uni & BCU



# Spacious 1 Bedroom Apartment - Glasswater Locks

Welcome to this exquisite apartment located in the prestigious Glasswater Locks development, offering a unique blend of luxury and comfort. This brand new home features a spacious layout, comprising one well-appointed bedroom and a modern bathroom, perfect for individuals or couples seeking a stylish living space.

As you enter the apartment, you will be greeted by a bright and airy reception room that provides a welcoming atmosphere. The property is adorned with luxury furnishings, including elegant crockery, ensuring that every detail has been thoughtfully considered for your convenience and enjoyment.

Situated on a generous corner plot, this apartment benefits from an abundance of natural light, creating a warm and inviting environment. The exclusive development boasts a range of impressive amenities, including a concierge service, a fully equipped gym, a tranquil library, a coffee lounge for socialising, and a games room for leisure activities. These facilities are designed to enhance your lifestyle and provide a sense of community within the building.

For those with vehicles, parking is available at an additional cost, ensuring that your needs are met with ease. This property represents a rare opportunity to reside in a luxurious setting, surrounded by modern conveniences and a vibrant community.

Do not miss the chance to make this stunning apartment your new home. Contact us today to arrange a viewing and experience the exceptional lifestyle that awaits you.

Call us on

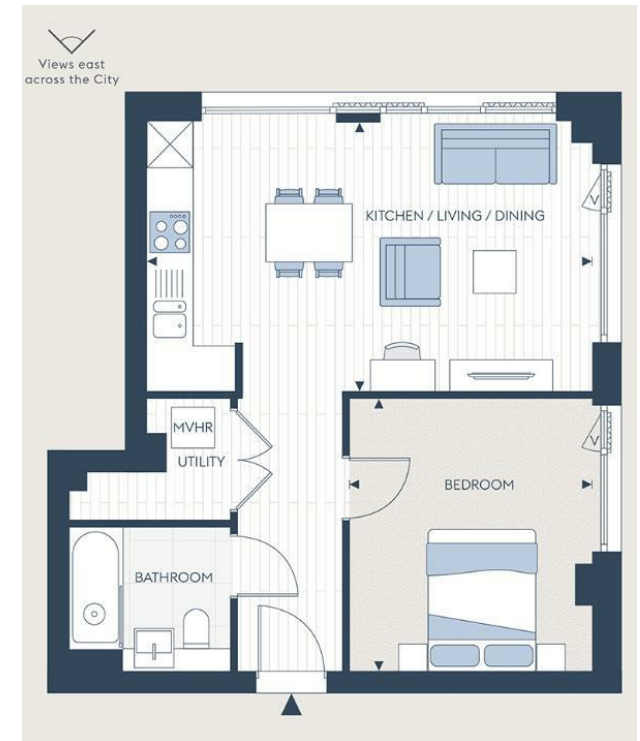
**0121 667 0343**

[hello@swift-property.co.uk](mailto:hello@swift-property.co.uk)

[www.swift-property.co.uk](http://www.swift-property.co.uk)

**Council Tax Band**

**B**



Agents Note: Whilst every care has been taken to prepare these particulars, they are for guidance purposes only. All measurements are approximate and are for general guidance purposes only and whilst every care has been taken to ensure their accuracy, they should not be relied upon and potential buyers are advised to recheck the measurements.